



## General Usage

New File	Ctrl+N
Open File	Ctrl+O
Close File	Ctrl+W
Save File	Ctrl+S
Print File	Ctrl+P
Undo	Ctrl+Z
Redo	Ctrl+Y
Cut	Ctrl+X
Copy	Ctrl+C
Paste	Ctrl+V
Quick Rebuild	Ctrl+B
Forced (Total) Rebuild	Ctrl+Q
Delete	Delete
Repeat Last Command	Enter
Help Menu	H
Rename Selected Feature	F2
Spell Checker	F7

## Toolbars & Windows

User-Defined Toolbar	S
User-Defined Mouse Gestures	Right Click and Drag
Hide/Show Feature Manager Tree	F9
Hide/Show All Active Toolbars	F10
Full Screen Mode On/Off	F11
Hide/Show Task Pane	Ctrl+F1
Collapse All Items in Feature Tree	Shift+C
Scroll to Top of Feature Tree	Home
Scroll to Bottom of Feature Tree	End

## New in 2012

Search SolidWorks Help	H
Search Knowledge Base	K
Search Community Forum	O
Search Commands	M

## Views

Toolbar of View Orientations	Spacebar
Front View	Ctrl+1
Back View	Ctrl+2
Left View	Ctrl+3
Right View	Ctrl+4
Top View	Ctrl+5
Bottom View	Ctrl+6
Isometric View	Ctrl+7
Normal to View	Ctrl+8
Previous View	Ctrl+Shift+Z

## Zooms & Rotation

Zoom Out	Z
Zoom In	Shift+Z
Zoom to Fit	F
Magnifying Glass	G
Rotate View 15 Degrees	Arrow Keys
Rotate View 90 Degrees	Shift+Arrow Keys
Pan View	Ctrl+Arrow Keys
Rotate View to Normal Screen	Alt+L/R Arrow Keys

## CAPINC Recommends You Add:

Open File Properties	Shift+P
View Planes	P
View Sketches	K
View Sketch Relations	R
Smart Dimension Tool On/Off	D
Measure Tool On/Off	M
Windows, Tile Vertically	T
Windows, Close All	Alt+W

Tech Tips | FAQ | Events | Training | Consulting & More

[www.capinc.com](http://www.capinc.com)

For Immediate Technical Support:  
800-424-2255 x1000  
support@capinc.com  
M-F: 9:00am—5:00pm



## SolidWorks & Simulation

Preferred input formats:

1. Native SolidWorks files
2. Parasolid (.x\_t or .x\_b)
3. ACIS (.sat)
4. STEP (.step or .stp)
5. IGES (.igs)

Preferred export formats:

For Alibre, AutoCAD, Inventor, CADkey or FEA packages	ACIS
For CATIA, SolidEdge, Unigraphics, or CAM packages	Parasolid
For Pro/Engineer	Native Pro/E format
For all others	Parasolid or ACIS

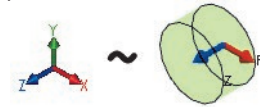
## New in SolidWorks 2012

- Costing Module to estimate sheet metal and machined parts cost
- Large Design Review mode to quickly load huge assembly files
- Feature Freeze to speed up rebuilds of complex parts
- And many other exciting new features! Ask us for more info.

Want installation guides or tips on buying a new computer?  
Go to: [capinc.com/support/faq](http://capinc.com/support/faq)

For polar coordinates  
Select an axis, then:

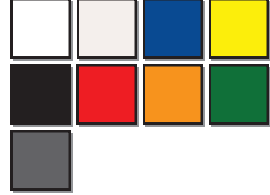
X=R  
Y=θ  
Z=axis



## Rapid Prototyping & Direct Digital Manufacturing

To order material: [capinc.com/capstore](http://capinc.com/capstore) or 800.424.2255 x2139

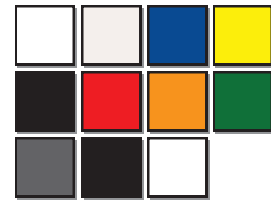
### uPrint Plus & Dimension



ABSplus

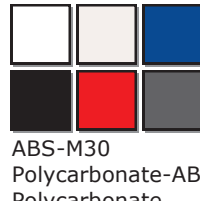
### FORTUS

250mc



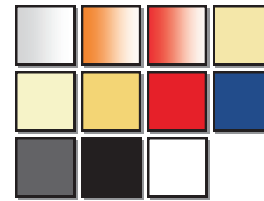
ABSplus

360mc



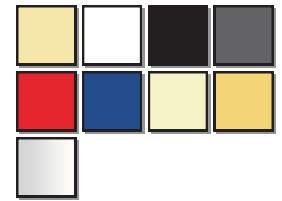
ABS-M30  
Polycarbonate-ABS  
Polycarbonate

400mc



ABS-M30, ABS-M30i, ABSi  
PC, PC-ABS, PC-ISO  
ULTEM 9085, PPSF

900mc



ABS-M30, ABS-M30i  
PC, PC-ABS, PC-ISO  
ULTEM 9085, PPSF, PPSU

## Enterprise Product Data Management

- Checked in by another user during the current CAD session
- The local file is of the same version as the file in the vault
- The local file is older than the file in the vault
- The file is edited in SolidWorks but not saved
- The local file is newer than the file in the vault
- The file does not exist in the fault

- Version 7/7 Local file and the latest version in vault match OR, if "Version 1/1", file might not yet be checked in
- Version -/7 There is no local file.
- Version -/7 Local file modified (not yet checked in).
- Version 4/7 You do not have the latest version of this file on your local hard disk.